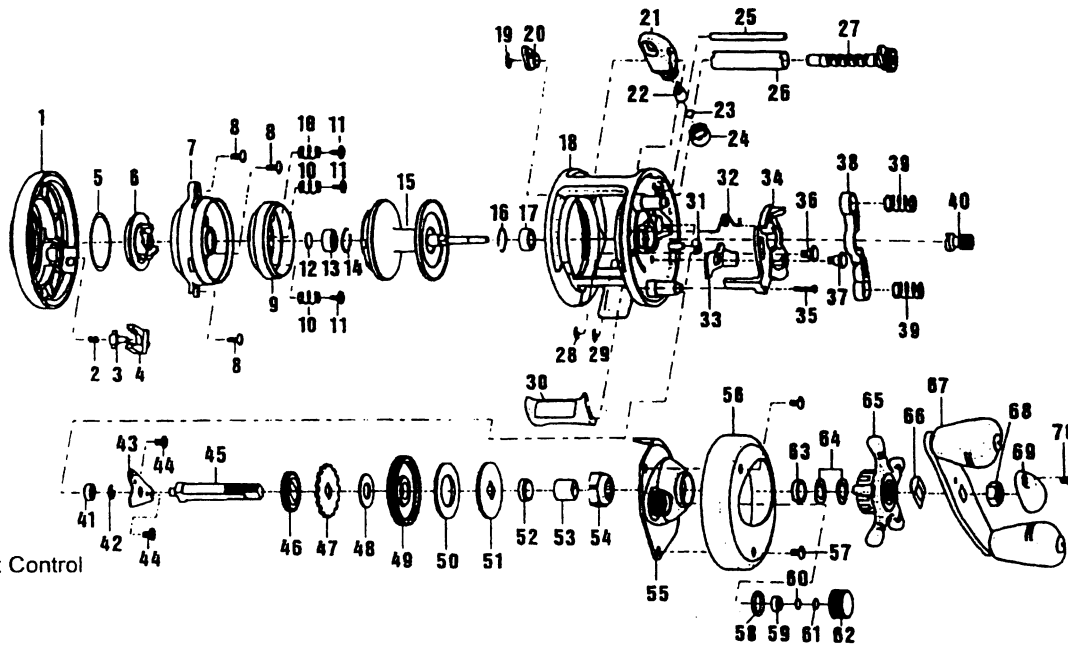


SPECIFICATIONS:

Med. FW
 165 yds / 12 lb Line
 Gear Ratio :
 IR300C - 5.2:1
 IR400CX, PR600CX - 6.3:1
 Line Retrieve (inches per turn) :
 IR300C - 21"
 IR400CX, PR600CX - 25.4"
 Weight - 10.5 oz.
 Bearings :
 IR300C - 2 BB; 1 RB
 IR400CX - 3 BB; 1 RB
 PR600CX - 5 BB; 1 RB



FEATURES:

Thumb Bar Spool Release
 Die Cast Aluminum Frame
 Continuous Anti-Reverse
 Bayonet Sidecover Release
 Externally Adjustable Centrifugal Cast Control
 Color:

IR300C -
 IR400CX - Silver / Gold
 PR600CX - Silver / Gold

Key No.	Description	IR300C	IR400CX	PR600CX	Price	Key No.	Description	IR300C	IR400CX	PR600CX	Price
1	Palm Side Cover Assembly	QV323-01	QV323-02	RV323-01		39	Pinion Yoke Spring	JX040-01	⇨⇨⇨	⇨⇨⇨	
2	Palm Sd. Cvr. Locking Spmg	QV096-01	⇨⇨⇨	⇨⇨⇨		40	Pinion Gear	JX011-01	XX011-01	⇨⇨⇨	
3	Palm Side Cover Locking Pin	QV095-01	⇨⇨⇨	⇨⇨⇨		41	Crank Shaft Bushing	JX017-01	⇨⇨⇨	N/A	
4	Palm Sd. Cvr. Release Btn.	QV119-01	⇨⇨⇨	⇨⇨⇨		41	Crank Shaft Bearing	N/A	N/A	XX017-01	
5	Centrifugal Dial Washer	QV111-01	⇨⇨⇨	⇨⇨⇨		42	E-Clip	QW120-01	⇨⇨⇨	⇨⇨⇨	
6	Centrifugal Dial	QV026-01	⇨⇨⇨	⇨⇨⇨		43	Crank Shaft Retainer	QV002-01	⇨⇨⇨	⇨⇨⇨	
7	Spool Cover	QV051-01	⇨⇨⇨	⇨⇨⇨		44	Crank Shaft Retrnr Screw	JX107-01	⇨⇨⇨	⇨⇨⇨	
8	Spool Cover Screw	QW125-01	⇨⇨⇨	⇨⇨⇨		45	Crank Shaft	QV008-01	⇨⇨⇨	⇨⇨⇨	
9	Brake Ring Assembly	QV342-01	⇨⇨⇨	⇨⇨⇨		46	O/S Drive Gear	JX112-01	⇨⇨⇨	⇨⇨⇨	
10	Brake Ring Spring	QV070-01	⇨⇨⇨	⇨⇨⇨		47	Trip Ratchet	JX083-01	⇨⇨⇨	⇨⇨⇨	
11	Brake Ring Retainer Screw	QV076-01	⇨⇨⇨	⇨⇨⇨		48	Ratchet Washer	QW111-01	⇨⇨⇨	⇨⇨⇨	
12	Spool Shaft Washer	XX038-02	⇨⇨⇨	⇨⇨⇨		49	Drive Gear	JX012-01	XX012-01	⇨⇨⇨	
13	Spool Shaft Bearing (L)	QV017-01	⇨⇨⇨	⇨⇨⇨		50	Drag Disc	JX059-01	⇨⇨⇨	⇨⇨⇨	
14	Clip Ring	JX080-01	⇨⇨⇨	⇨⇨⇨		51	Drag "D" Washer	QV045-01	⇨⇨⇨	⇨⇨⇨	
15	Spool Assembly	QV321-01	⇨⇨⇨	RV321-01		52	Drag Collar	QV088-01	⇨⇨⇨	⇨⇨⇨	
16	Clip Ring	JX080-01	⇨⇨⇨	⇨⇨⇨		53	One Way Bearing Sleeve	ZW052-01	⇨⇨⇨	⇨⇨⇨	
17	Spool Shaft Bearing (R)	JX106-01	⇨⇨⇨	⇨⇨⇨		54	One Way Bearing	ZV063-02	⇨⇨⇨	N/A	
18	Frame	QV001-01	QV001-02	N/A		55	Clutch Housing	QV066-01	⇨⇨⇨	⇨⇨⇨	
18	Frame Assembly	N/A	N/A	RV301-01		56	Gear Side Cover	QV024-01	QV024-02	N/A	
19	E-Clip	QW120-01	⇨⇨⇨	NX090-01		56	Gear Side Cover Assy.	N/A	N/A	RV324-01	
20	Worm Shaft Bushing	JX067-01	⇨⇨⇨	N/A		57	Gear Side Cover Screw	QW123-01	⇨⇨⇨	⇨⇨⇨	
20	Worm Shaft Bearing	N/A	N/A	XX117-01		58	Tension Knob O-Ring	QW101-01	⇨⇨⇨	⇨⇨⇨	
21	Line Guide Carrier Assy.	QV347-01	⇨⇨⇨	⇨⇨⇨		59	Tension Knob Bushing	JX117-01	N/A	N/A	
22	Line Guide Pawl	JX006-03	⇨⇨⇨	⇨⇨⇨		59	Tension Knob Bearing	N/A	XX117-01	⇨⇨⇨	
23	Line Guide Pawl Washer	JX035-01	⇨⇨⇨	⇨⇨⇨		60	Spool Tension Washer	QW032-02	⇨⇨⇨	⇨⇨⇨	
24	Line Guide Carrier Screw	JX007-02	⇨⇨⇨	⇨⇨⇨		61	Spool Cushion Washer	JX082-01	⇨⇨⇨	⇨⇨⇨	
25	Line Guide Carier Guide	JX061-01	⇨⇨⇨	⇨⇨⇨		62	Spool Tension Knob	QV033-01	QV033-02	QV033-01	
26	Worm Shaft Guide	JX016-01	⇨⇨⇨	⇨⇨⇨		63	Drag Collar	RV088-01	⇨⇨⇨	⇨⇨⇨	
27	Worm Shaft Assembly	JX372-01	⇨⇨⇨	RV372-01		64	Spring "D" Washer	JX046-01	⇨⇨⇨	⇨⇨⇨	
28	E-Clip	NX092-01	⇨⇨⇨	⇨⇨⇨		65	Star Drag	QV055-01	⇨⇨⇨	RV055-01	
29	E-Clip	NX092-01	⇨⇨⇨	⇨⇨⇨		66	Handle Washer	NX054-01	⇨⇨⇨	⇨⇨⇨	
30	Thumb Bar Assembly	QV309-01	⇨⇨⇨	⇨⇨⇨		67	Handle Assembly	QV318-01	QV318-03	QV318-02	
31	Kick Lever Spring	QV097-01	⇨⇨⇨	⇨⇨⇨		68	Handle Nut	QW003-01	⇨⇨⇨	RV003-01	
32	Release Slider Spring	QV104-01	⇨⇨⇨	⇨⇨⇨		69	Handle Nut Cap	JX034-02	⇨⇨⇨	RV034-01	
33	Kick Lever	QV077-01	⇨⇨⇨	⇨⇨⇨		70	Handle Nut Cap Screw	QW123-01	⇨⇨⇨	N/A	
34	Release Slider	QV039-01	⇨⇨⇨	⇨⇨⇨		71	Worm Shaft Brng Retnr.	N/A	N/A	RV067-01	
35	Thumb Bar Screw	ZW053-01	⇨⇨⇨	⇨⇨⇨		72	Drag Click Ratchet	N/A	N/A	RV113-01	
36	Release Slider Guide Pin	QV102-01	⇨⇨⇨	⇨⇨⇨		73	Drag Click Pawl	N/A	N/A	RV114-01	
37	Kick Lever Guide Pin	QV068-01	⇨⇨⇨	⇨⇨⇨		74	Drag Click Pawl Retainer	N/A	N/A	RV080-01	
38	Pinion Yoke	QV025-01	⇨⇨⇨	⇨⇨⇨							

MODEL INTRODUCED: 1998	EFFECTIVE DATE OF PARTS LIST/DIAGRAM: Oct. 1998	DISCONTINUED
-------------------------------	--	---------------------