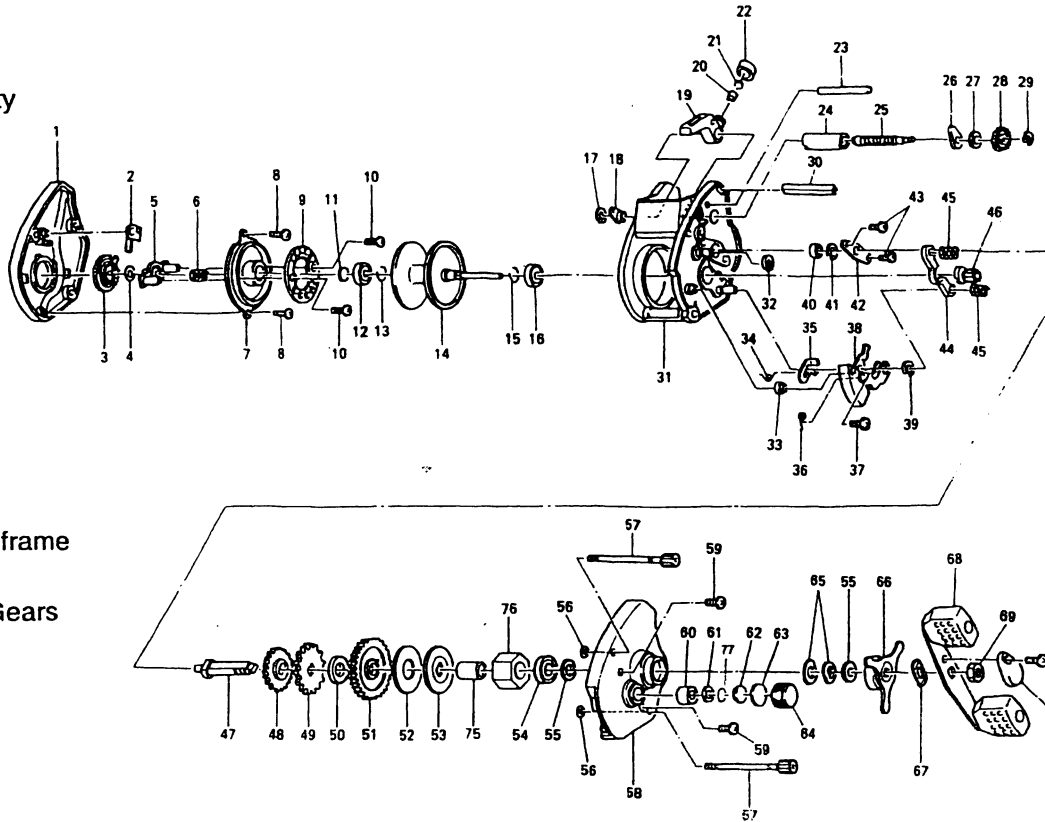


PECIFICATIONS:

- Medium Freshwater
- 165 yds./12 lb. Line Capacity
- 2 BB; 1 RB
- 1310 CP**
- 3.8:1 Ratio
- 9.2 oz. Weight
- 1310 CX**
- 6.0:1 Ratio
- 9.3 oz. Weight

FEATURES:

- Continuous Anti-Reverse
- DynaMag magnetic anti-backlash control
- Rigid one-piece, aluminum frame
- Forged aluminum spool
- Machined brass Magnum Gears
- Q-cast thumb button clutch
- Multi-disc drag system
- Left hand retrieve
- Color:
 - 1310CP** - Bronze
 - 1310CX** - Light Gold



Key No.	1310CP Part No.	1310CX Part No.	Description	Price	Key No.	1310CP Part No.	1310CX Part No.	Description	Price
1	AV323-03	AV323-02	Left Side Cover Assy	10.75	38	AV339-01	AV339-01	Release Slider Assy	2.
2	AV108-01	AV108-01	Magnet Click Claw	1.55	39	QW120-01	QW120-01	Yoke Post E-Clip	
3	AV026-01	AV026-01	Magnet Dial	1.55	40	JX017-01	JX017-01	Crank Shaft Bushing - L	
4	NX105-01	NX105-01	Dial Friction Ring	.62	41	QW120-01	QW120-01	Crank Shaft E-Clip	
5	AV028-01	AV028-01	Slider Cam	1.55	42	JX002-01	JX002-01	Crank Shaft Retainer	
6	NX071-01	NX071-01	Slide Cam Spring	.52	43	JX107-01	JX107-01	Crank Shaft Retainer Screw	
7	AV051-01	AV051-01	Spool Cover	2.80	44	AV025-01	AV025-01	Pinion Yoke	
8	AV125-01	AV125-01	Spool Cover Screw	.70	45	AV040-01	AV040-01	Yoke Spring	
9	AV330-01	AV330-01	Magnet Plate Assy	7.40	46	UW011-01	TW011-01	Pinion Gear	5.
10	QW076-02	QW076-02	Magnet Plate Screw	.21	47	JX008-01	JX008-01	Crank Shaft	2.
11	XX038-02	XX038-02	Spool Shaft Washer	.26	48	JX112-01	JX112-01	O/S Drive Gear	
12	XX106-01	XX106-01	Spool Shaft Bushing	1.15	49	JX083-01	JX083-01	Trip Ratchet	
13	JX080-01	JX080-01	Clip Ring	.26	50	QW111-01	JX111-01	Ratchet Washer	
14	AV321-01	AV321-01	Spool Assy	10.15	51	UW012-01	TW012-01	Drive Gear	7.
15	JX080-01	JX080-01	Clip Ring	.26	52	AV059-01	AV059-01	Drag Disc	1.
16	JX106-01	JX106-01	Spool Shaft Bearing	6.33	53	AV045-01	AV045-01	Drag "D" Washer	2.
17	QW120-01	QW120-01	Worm Shaft Bush E-Clip	.26	54	TW058-01	TW058-01	Crank Shaft Ball Bearing - U	7.
18	XX067-01	XX067-01	Worm Shaft Bushing "B"	.80	55	JX038-01	JX038-01	Crank Shaft Washer	
19	AV347-01	AV347-01	Line Guide Carrier Assy	2.60	56	JX073-01	JX073-01	Thumb Screw O-Ring	
20	JX006-01	JX006-01	Line Guide Pawl	1.80	57	AV374-01	AV374-01	Thumb Screw Assy	3.
21	JX035-01	JX035-01	Line Guide Pawl Washer	.26	58	AV024-03	AV024-02	Right Side Cover	13.
22	JX007-02	JX007-02	Pawl Cap Screw	.52	59	QW123-07	QW123-07	Right Side Cover Screw	
23	JX061-01	JX061-01	Carrier Guide	.98	60	JX117-01	JX117-01	Tension Knob Bushing	
24	JX016-01	JX016-01	Worm Shaft Guide	.72	61	AV101-01	AV101-01	Tension Knob O-Ring	
25	AV072-01	AV072-01	Worm Shaft	4.65	62	JX081-01	JX081-01	Spool Tension Collar	2.
26	AV067-01	AV067-01	Worm Shaft Bushing "A"	.80	63	AV083-01	AV083-01	Cushion Washer	
27	AV035-01	AV035-01	Washer - Worm Shaft Bushing	.50	64	AV033-01	AV033-01	Spool Tension Knob	2.
28	AV085-01	AV085-01	Level Wind Gear	.80	65	JX046-01	JX046-01	Spring "D" Washer	
29	NX092-01	NX092-01	Level Wind Gear E-Clip	.30	66	AV355-01	AV355-01	Star Drag Assy	6.
30	AV027-01	AV027-01	Front Support	2.85	67	NX054-01	NX054-01	Handle Washer	
31	AV301-01	AV301-02	Frame Assy	27.50	68	UW318-03	AV318-02	Handle Assy	8.
32	QW120-01	QW120-01	Yoke Post E-Clip	.26	69	QW003-01	QW003-01	Handle Nut	
33	JX068-01	JX068-01	Release Slider Guide Bushing	1.08	70	QW034-04	QW034-01	Handle Nut Cap	
34	AV097-01	AV097-01	Kick Lever Spring	.70	71	QW123-01	QW123-01	Handle Nut Cap Screw	
35	AV077-01	AV077-01	Kick Lever	1.30	75	CW052-01	CW052-01	One Way Bearing Sleeve	2.
36	JX104-01	JX104-01	Release Slider Spring	.21	75	UQ063-02	UQ063-02	One Way Bearing	9.
37	QW123-01	QW123-01	Release Slider Screw	.15	77	QW032-02	QW032-02	Spool Tension Washer	

MODEL INTRODUCED	1310 CP - 1996 1310 CX - 1997	EFFECTIVE DATE OF PARTS LIST/DIAGRAM	Oct. 1996	DISCONTINUED	N/A
------------------	----------------------------------	--------------------------------------	-----------	--------------	-----

Prices subject to change without notice. Prices do not include postage and handling.

PLEASE ORDER BY PART NUMBER Zebco Division Brunswick Corporation, Box 270, Tulsa, OK 74101 USA 918-831-6965

